

**Goat Anti-PAX8 (N Terminus) Antibody**  
**Peptide-affinity purified goat antibody**  
**Catalog # AF1794b****Specification**

---

**Goat Anti-PAX8 (N Terminus) Antibody - Product Information**

Application	WB, IHC, E
Primary Accession	<a href="#">Q06710</a>
Other Accession	<a href="#">NP_054698</a> , <a href="#">7849</a> , <a href="#">18510 (mouse)</a> , <a href="#">81819 (rat)</a>
Reactivity	Human
Predicted	Mouse, Rat
Host	Goat
Clonality	Polyclonal
Concentration	100ug/200ul
Isotype	IgG
Calculated MW	48218

**Goat Anti-PAX8 (N Terminus) Antibody - Additional Information****Gene ID** 7849**Other Names**

Paired box protein Pax-8, PAX8

**Dilution**

WB~~1:1000

IHC~~1:100~500

E~~N/A

**Format**

0.5 mg IgG/ml in Tris saline (20mM Tris pH7.3, 150mM NaCl), 0.02% sodium azide, with 0.5% bovine serum albumin

**Storage**

Maintain refrigerated at 2-8°C for up to 6 months. For long term storage store at -20°C in small aliquots to prevent freeze-thaw cycles.

**Precautions**

Goat Anti-PAX8 (N Terminus) Antibody is for research use only and not for use in diagnostic or therapeutic procedures.

**Goat Anti-PAX8 (N Terminus) Antibody - Protein Information****Name** PAX8**Function**

Transcription factor for the thyroid-specific expression of the genes exclusively expressed in the

thyroid cell type, maintaining the functional differentiation of such cells.

**Cellular Location**

Nucleus.

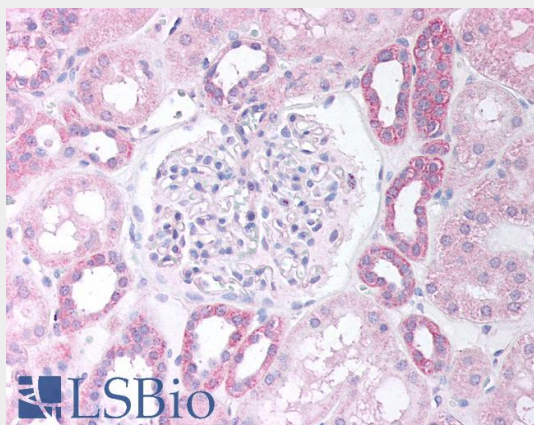
**Tissue Location**

Expressed in the excretory system, thyroid gland and Wilms tumors

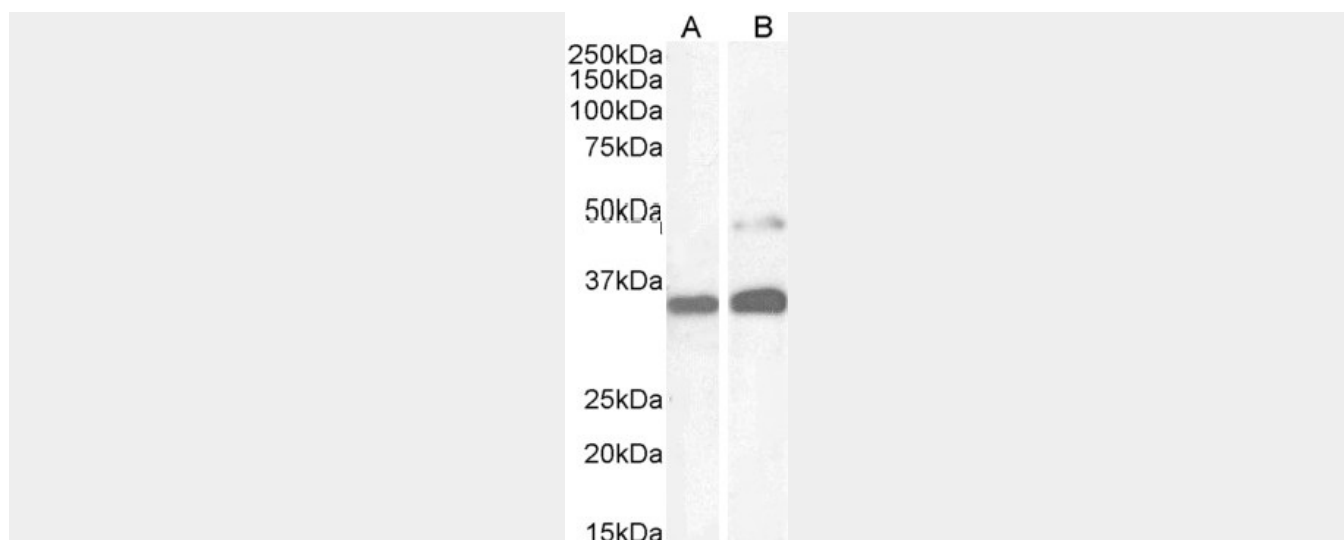
**Goat Anti-PAX8 (N Terminus) Antibody - Protocols**

Provided below are standard protocols that you may find useful for product applications.

- [Western Blot](#)
- [Blocking Peptides](#)
- [Dot Blot](#)
- [Immunohistochemistry](#)
- [Immunofluorescence](#)
- [Immunoprecipitation](#)
- [Flow Cytometry](#)
- [Cell Culture](#)

**Goat Anti-PAX8 (N Terminus) Antibody - Images**

AF1794b (5 µg/ml) staining of paraffin embedded Human Kidney Cortex. Steamed antigen retrieval with citrate buffer pH 6, AP-staining.



AF1794b (1 µg/ml) staining of Human Kidney (A) and HeLa cell (B) lysate (35 µg protein in RIPA buffer). Detected by chemiluminescence.

### Goat Anti-PAX8 (N Terminus) Antibody - Background

This gene encodes a member of the paired box (PAX) family of transcription factors. Members of this gene family typically encode proteins that contain a paired box domain, an octapeptide, and a paired-type homeodomain. This nuclear protein is involved in thyroid follicular cell development and expression of thyroid-specific genes. Mutations in this gene have been associated with thyroid dysgenesis, thyroid follicular carcinomas and atypical follicular thyroid adenomas. Alternatively spliced transcript variants encoding different isoforms have been described.

### Goat Anti-PAX8 (N Terminus) Antibody - References

Maternal genes and facial clefts in offspring: a comprehensive search for genetic associations in two population-based cleft studies from Scandinavia. Jugessur A, et al. PLoS One, 2010 Jul 9. PMID 20634891.

Mass spectrometry approaches for the redox characterization of protein cysteine residues the case of the transcription factor Pax-8. Scaloni A, et al. Methods Enzymol, 2010. PMID 20513481.

Comparative genomics reveals a functional thyroid-specific element in the far upstream region of the PAX8 gene. Nitsch R, et al. BMC Genomics, 2010 May 14. PMID 20470391.

PAX8 (+)/p63 (-) immunostaining pattern in renal collecting duct carcinoma (CDC): a useful immunoprofile in the differential diagnosis of CDC versus urothelial carcinoma of upper urinary tract. Albadine R, et al. Am J Surg Pathol, 2010 Jul. PMID 20463571.

PAX8 Expression in well-differentiated pancreatic endocrine tumors: correlation with clinicopathologic features and comparison with gastrointestinal and pulmonary carcinoid tumors. Long KB, et al. Am J Surg Pathol, 2010 May. PMID 20414099.